



Minchinbury Public School

13 February 2024

202 McFarlane Drive
Minchinbury, 2770

Principal: Miss Webster

<https://www.facebook.com/minchinburyps>

www.minchinbur-p.schools.nsw.edu.au/

Thursday 15 February @ 5:30pm: P&C AGM in the library

Wednesday 21 February @ 3:30pm: Meet the Teacher

Tuesday 27 February @ 9:15am: Investiture Assembly

Minchinbury Mentions

Welcome back everyone!!! We now have everyone back at school.

To say that I have missed the energy, friendliness, kindness and education of this school is a total understatement. You are the reason that I am happy at school!

2024 P&C Committee

It's that time again. We are looking for community members to join us in providing opportunities and experiences for our children.

If you are interested in becoming part of our P&C, please consider filling out the 2024 committee nomination form included in this newsletter.

Even if you're not interested in being on the P&C Committee but would like to be part of the discussions about the future of our school, come along to our meeting this **Thursday (15 February) at 5:30pm in the library**.

If you would like more information, please feel free to come and chat to me.

We need you!!

Meet the Teacher – 21 February between 3:30pm and 4:30pm

Now that we've all settled into our classes, we would love for you to come and meet us. We are welcoming all families into our school in the afternoon so that you can meet us and we can meet you. No need to let us know if you are coming. Just come on in!

Miss Rebecca Webster

Principal

Upcoming events for the next two weeks

- 15 Feb: Year 6 Shirt Presentation
- 15 Feb: 5:30pm P&C AGM
- 21 Feb: 3:30pm Meet the Teacher
- 22 Feb: 2:15pm Stage 2 Assembly
- 23 Feb: 2:15pm Kindergarten Assembly
- 27 Feb: 9:15am Investiture Assembly

A Kindergarten teacher asked a new Kindergarten student if he could read a sentence that was written on the page. He said, "I can't read that yet but I will soon." This is why Minchinbury is such a great place to be.

MPS P&C News

MINCHINBURY PUBLIC SCHOOL P&C ASSOCIATION ANNUAL GENERAL MEETING

Notice is hereby given that the 2024 Annual General Meeting of the Minchinbury Public School P&C Association will be held on **Thursday 15 February 2024**.

Meeting Details

Date: Thursday 15 February 2024

Time: 5:30pm

Place: Library

We thank you for your continued support and look forward to welcoming you at the meeting.

Minchinbury Public School P&C Association

MINCHINBURY PUBLIC SCHOOL P&C ASSOCIATION CALL FOR NOMINATIONS FOR 2024 POSITIONS

The Annual General Meeting will be held on **Thursday 15 February 2024 at 5:30pm**.

Nominations are called for the following positions:

President, Vice-President, Secretary, Treasurer, Fundraising Coordinator.

Nominations must be submitted to the Principal of Minchinbury Public School, who will act as the returning officer, no later than **5:30pm on Thursday 15 February 2024**.

Minchinbury Public School P&C Association

MINCHINBURY PUBLIC SCHOOL P&C ASSOCIATION NOMINATION FORM – 2024

Position Nominated: _____

Name of the Nominee: _____

Name of the Proposer: _____ Signature: _____

Name of the Seconder: _____ Signature: _____

I accept the nomination to the above position.

Signature of the nominee: _____ Date: _____

Minchinbury Public School Term 1 Calendar

We have been working hard to plan for some amazing experiences for our students. To assist you to plan ahead, here are some of the 'big ticket' items planned for this term. In the event that we need to change the date of any event, we will notify the community as soon as possible.

Community members can access the parent calendar on School Bytes for all 2024 dates.

School Week	Date	Event
3	14 February	Year 3 to Year 6 Swimming Carnival @ Mt Druitt Pools
3	15 February	Year 6 Shirt Presentation
3	15 February	P&C AGM @ 5:30pm
3	16 February	PSSA Trials
4	21 February	Meet the Teacher @ 3:30pm
4	22 February	Stage 2 Assembly @ 2:15pm
4	23 February	PSSA Trials / Training
4	23 February	Kindergarten Assembly @ 2:15pm
5	27 February	Investiture Assembly @ 9:15am
5	29 February	P&C Mufti Day for the Easter Raffle
5	29 February	Stage 3 Assembly @ 2:15pm
5	1 March	PSSA Competition Starts
5	1 March	Stage 1 Assembly @ 2:15pm
6	5 March	Mt Druitt Zone Swimming Carnival @ Blacktown Aquatic Centre
6	8 March	Clean Up Schools Day
6	8 March	Breakfast Club Begins
7	12 March	Fundraiser – Dress as a Musician Day
7	12 March	Evacuation Drill
7	13 March	Scripture Begins
7	13 March	NAPLAN Begins
7	14 March	Playground Pals Training Day
7	14 March	P&C Meeting @ 5:30pm
8	19 March	MPS Cross Country
8	22 March	Harmony Day
9	25 March	P&C Easter Raffle Drawn
9	28 March	Leadership Day with RHHS, ECPS, MDPS, RHPS
9	24 March	K-2 Easter Hat Parade
9	29 March	Public Holiday – Good Friday
10	1 April	Public Holiday – Easter Monday
10	2 April	Year 6 Fundraiser – Jersey Day
10	3 April	Stage 2 Assembly @ 2:15pm
10	4 April	School Photo Day
10	5 April	Kindergarten Assembly @ 2:15pm
11		Wellbeing Week
11	11 April	PBL End of Term Reward
11	11 April	Stage 3 Assembly @ 2:15pm
11	12 April	ANZAC Day Ceremony @ 10am
11	12 April	Stage 1 Assembly @ 2:15pm
11	12 April	Last Day of Term 1

Last Day of Term 1:

Friday 12 April 2024

First Day of Term 2:

Tuesday 30 April 2024

Notes home

Date	Grade	Title of note

Notes sent home will have a deadline for payments and for notes to be returned to the school. No payments or notes will be accepted after the deadline has passed. If you will not be able to meet the deadline and wish your child to be involved in the 'note activity' you must contact the office **BEFORE** the deadline has passed.

Positive Behaviour for Learning (PBL) focus

This fortnight's PBL focus is:

Wearing a School Hat to Play

Minchinbury Public School Vision

At Minchinbury Public School
we are a motivated and respectful
community of learners.



ATTEND TODAY, ACHIEVE TOMORROW

GOOD SCHOOL ATTENDANCE MEANS...



PRESCHOOLERS
build skills and develop
good habits for showing
up on time



**ELEMENTARY
STUDENTS**
read well by the
end of third grade



HIGH SCHOOLERS
stay on track for
graduation



**COLLEGE
STUDENTS**
earn their degrees



WORKERS
succeed in
their jobs

*Too many absences can stop students from succeeding in school and in life.
If your child misses seven days of school each term (less than one day a week),
that adds up to one whole year of primary school missed by the end of Year 6!*

ATTENDANCE MATTERS!

Minchinbury Public School Pride Moments

Channel 7 Sunrise!

A huge thank you to everyone who got up before sunrise to be on Sunrise. Our school woke up Australia with drumming, league tag, ukulele playing, reading, Kindergarten students and a sausage sizzle. Thank you!



Minchinbury Public School Pride Moments

Rooty Hill High School Excellence Assembly

On Friday 9 February, our school captains (Dylan Kesten and Daniella Maestrale) and our principal (Miss Webster) attended the annual Rooty Hill High School Excellence Assembly to present awards to some very deserving high school students. This was Dylan and Daniella's first official duty as representatives of MPS. They were incredibly respectful and represented our school very well. It was also fantastic catching up with some of our ex-MPS students.



Meet our School Captains



Daniella Maestrale and Dylan Kesten were SRC reps together in Kindergarten.

Here they are again as the School Captains of our school.

Everyone say, 'ahhh!'

Minchinbury Public School Pride Moments

Welcome to MPS

We are fortunate to have some new faces join our MPS staff this year.

I know that you'll welcome them with open arms. From right to left: Miss Tara Splarn (1/2S), Miss Gemma Wade (1W), Mrs Michelle Kahnt (RFF), Mr Andrew Hillier (5H)



Ethan Phan – National Representative

Ethan competed in the U9's Boys National Club Futsal Championship over the School holidays representing NSW Sydney.

Going against 12 teams across Australia with 2 to 3 games each day for the 4 Day tournament. They were crowned U9 Boy's Champion for 2024.

Ethan has also been selected to represent Australia in the Australian Futsal Team for the U10's Boys which he will travel to Jiangmen, China to compete in the 2024 Jiangmen International Futsal Cup in CHINA Date: 21/22nd July - 2nd August 2024.

We're so proud of Ethan and all his achievements so far. Being the first time playing Futsal and taking home the National Championship for 2024 here in Australia, to being selected for the Australian team. This has opened a lot of opportunities for him already.





Welcome to what will be an exciting first year of primary school!
 Our Early Stage 1 team of teachers are motivated, supportive and enthusiastic educators who are eager to start the learning journey with our Kindergarten students.

Early Stage 1 and School Information

Early Stage 1 teachers:

Mrs Barker – KB
 Mrs Lieb – KL
 Miss Ogorelica – KO
 (Assistant Principal)

Teachers supporting Early Stage 1:

Mrs Pajak – Learning Support
 Mrs Popple – Learning Support
 Mrs Booth – Library (Thursdays)
 Mr Allen – Creative Arts

Seesaw:

Seesaw is a free application used at Minchinbury Public School. Seesaw is a digital platform that allows teachers to communicate with families and keep them in the loop on the learning that their child is doing at school.



School Bytes:

School Bytes is a free application used at Minchinbury Public School. It is an administrative management platform that allows families to digitally make payments, communicate absences, provide permission for school events, and, access academic reports through the parent portal.



Smiling Mind:

Smiling Mind is a non-for-profit organisation that offers a range of programs and resources to support the development of children's social and emotional skills.
 At Minchinbury Public School, we have implemented the Primary Mindfulness Curriculum in all classrooms from K-6. Students learn about mental health and mindfulness in supportive, engaging and positive classroom environments.

Positive Behaviour for Learning:

To ensure that our students have a positive start to the year, teachers are explicitly teaching Positive Behaviour for Learning (PBL) lessons to their students, focusing on targeted rules and expectations that encourage them to be respectful, safe learners. Students will participate in lessons on how their bodies grow and change. They will also participate in a social skills program to develop playing and learning to socialise.

Literacy and Numeracy

English

Students are learning to use background knowledge to make connections between their own life and a text. They are learning to identify a narrative as a real or imagined story with characters and events. Students are learning that a sentence is a complete thought with a subject and a verb.

Students will focus on phonological awareness skills, which is the different ways that language can be broken down into smaller parts. They will learn and build their awareness through nursery rhymes and quality picture books.

To support the explicit teaching of reading and writing in the early years, modelled reading, handwriting, oral language and communication lessons are embedded in daily literacy sessions.



Mathematics

Students will learn in challenging, collaborative and supportive mathematical environments. Students will engage in lessons to explore the following big ideas:

- Attributes can be used to sort objects.
- Patterns have something that repeats over and over and over.
- What needs to be measured determines the unit of measurement.
- Smaller numbers can be found hidden in bigger numbers.
- New shapes can be made by joining (combining) or partitioning (breaking apart) existing shapes.



Other Key Learning Areas

Geography

Students will explore people and places, with a particular focus on their schooling days. They will develop an understanding of what makes a place special and how this may be different for other people.



Science

Students will be exploring the Physical World. They will observe the physical characteristics of objects and how they move. This unit of study allows students to investigate push and pull forces.



PDHPE

Students will participate in a weekly dance program. Our weekly dance program encourages students to control their body movements, follow directions and have fun.



Creative Arts

There are many opportunities for students to participate in the Creative Arts.
Visual Arts: students will make pictures and other artworks.
Music: students will sing, play and move to a range of music.



General Information

Term 1 Important Dates


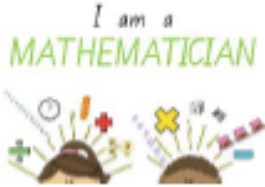

21/02/2024 – Meet the Teacher Afternoon (3:30pm-4:30pm).
 23/02/2024 – Early Stage 1 Assembly (2:15pm-3:00pm) in the hall.
 29/02/2024 – P&C Muffin Day for Easter Raffle.
 12/03/2024 – Musician Dress Up Fundraiser.
 22/03/2024 – Harmony Day.
 28/03/2024 – K-2 Easter Hat Parade.
 04/04/2024 – School Photo Day.
 05/04/2024 – Early Stage 1 Assembly (2:15pm-3:00pm) in the hall.
 12/04/2024 – ANZAC Day Ceremony (10:00am) and last day of Term 1.

Contacting Us

Feel free to contact the school office on (02) 9832 1488 to arrange an appointment to speak with your child's classroom teacher about their learning or wellbeing.

Miss Ogorelica
 Early Stage 1 Assistant Principal

Stage 1 – Term 1 Overview

Monday	Tuesday	Wednesday	Thursday	Friday
	<p>Library – 1B, 1W, 2B and 1/2S</p> <p>Sport Day Purple sport shirt to be worn to school.</p>	<p>Scripture</p>	<p>Library – 1P and 2W</p>	
<p>Stage 1 teachers Mrs Vyse and Mrs Bell – 1B Miss Plumb and Mrs Wallace – 1P Miss Wade – 1W Miss Splarn – 1/2S Mrs Bartlett – 2B Mrs Williams – 2W Mrs Williams – Assistant Principal</p>		<p>Teachers supporting Stage 1 Mrs Booth – Library Mrs Kahnt – RFF Mrs Menzies – RFF Miss Thomas – Music Mrs Cooper – Learning & Support Mrs Vasek – Learning & Support</p>		
<p>English English includes reading, writing, vocabulary, handwriting, oral language and communication, understanding and responding to literature.</p> <p>Students will also undertake daily lessons in phonemic awareness, phonics and spelling.</p> 		<p>Mathematics Students will learn in challenging, collaborative and supportive mathematical environments.</p> <p>Students will engage in lessons involving: addition & subtraction, multiplication & division, patterns & algebra, length, area, volume, mass, 2D space, 3D space and data.</p> 		
<p>Other Key Learning Areas Students will undertake learning in Science on the topic of Physical World. For History, students will be studying the topic of The Past in the Present. For PDHPE, students will be learning the skills of throwing and catching and exploring the unit of Getting Along with Others.</p>		<p>Seesaw Parents and carers are encouraged to download the free app called Seesaw. Your child's classroom teacher may communicate messages about upcoming events or your child's learning through this app.</p> 		

Feel free to contact the school office on 9832 1488 to make an appointment to speak with your child's classroom teacher about their learning or wellbeing.

Mrs Williams
Stage 1 Assistant Principal

Stage 3 Scope and Sequence Term 1 2024

English

Students will learn to critically analyse and evaluate ideas in texts and use various language devices. They will look at how authors create characters to drive plots and to represent themes. Students will make connections between themselves and elements of texts. They will use the writing process of planning, writing, reviewing and editing to write quality, Stage-appropriate narratives. They will focus on including action, tension, dialogue and exciting endings in their narratives.

Spelling

Students using a range of strategies, including knowledge of letter-sound correspondences and common letter patterns, to spell familiar and some unfamiliar words

Reading

During guided, modelled and independent reading sessions, students are learning to draw on an increasing range of skills and strategies to fluently read, view and comprehend a range of texts.

Science

Students will begin the unit on 'Earth and Space'. They learn about Earth's place in the solar system, changes on its surface caused by natural disasters and the exploration of how these may be mitigated. Students explore the science of the solar system and space. They will develop an understanding of the 8 planets and other celestial objects in the Solar System and beyond.

Creative Arts

Visual Arts- Students will participate in lessons that relate to our English and History units. They will make artworks that represent a variety of subject matter.

Music- Lessons will continue with Miss Thomas

Mathematics

Classes will be taught Number (Addition, Subtraction, Multiplication, Division, Fractions and Decimals and Patterns and Algebra) according to students needs through short, sharp and focused daily activities and monitoring student's progress.

Other Strands that will be taught this term are: Angles, 2D Space, 3D Space, Length, Position, Data and Chance.

Homework

Homework will be handed out from Week 4 of this term. Students will get homework on a Monday and it is to be returned in on the Friday.

Physical Education

Students will learn a Skills and Tactics Based Program this term. They will participate in invasion games such as basketball. The unit offers a variety of activities for each lesson. Teachers choose the combination of activities to suit student needs. Students will also be learning cross country running skills.

Personal Development & Health

Students will participate in lessons relating to Positive Behaviour for Learning (PBL), Child Protection and Road Safety this term.

History

This term we will be beginning our unit on The Australian Colonies. Students will look at the founding of British colonies and the development of a colony. They learn about what life was like for different groups in the colonial period. They examine significant events and people, political and economic developments, social structures, and settlement patterns.

Smiling Mind is continuing at MPS!



Date: 2024

At MPS, we are continuing to embed a whole-school mindfulness program in every classroom.

We are very excited to continue our Smiling Mind journey with our teachers and students.

— Let your mind thrive.

Smiling Mind is a non-for-profit organisation with a bold ambition - to change the way we all look after our mental health.

Smiling Mind offers a range of programs and resources designed to make mindfulness accessible, easy to practice, and as normal as brushing your teeth.

Our Vision: To help every mind thrive.

Our Mission: To provide accessible, lifelong tools to support healthy minds.

Mental health and wellbeing is important as it underpins the way children feel about themselves, how they **think, learn, and relate** to others. With good mental health, research shows children are **happier**, more **confident**, more **resilient learners** and able to **build positive relationships**.

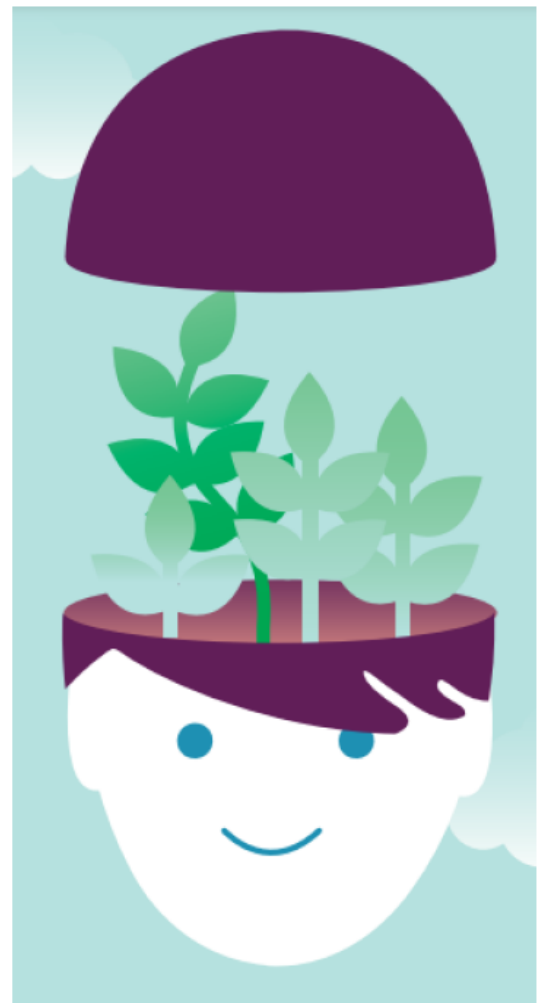
Good mental health in childhood sets young people up for positive mental health in the future.

Mindfulness is a state of being aware and undistracted in the present moment and observing life as it unfolds without analysis or judgment.

It is about focusing attention on the **here** and **now**, rather than thinking about the past or worrying about the future.

Practising mindfulness is attention training, designed to strengthen the mind. The process of repeatedly paying attention is similar to activities you might undertake to build a muscle – a bicep curl for the mind! **In this way practising mindfulness strengthens the minds' ability to focus, pay attention and reduce worry — the more we practise, the stronger the mind becomes.** Think of mindfulness as gym for the mind.

The Primary Mindfulness Curriculum provides students with a deeper understanding of the concepts of mindfulness as well as a regular mindfulness practice. It is mapped to the Australian Curriculum and provides a framework to ensure students are **developing essential social and emotional skills**.





MINCHINBURY PUBLIC SCHOOL

202 McFarlane Drive Minchinbury 2770

Telephone: 9832 1488 Fax: 9832 1713

Email: minchinbur-p.admin@det.nsw.edu.au

Web site: www.minchinbur-p.schools.nsw.edu.au

Principal: Rebecca Webster

2022 & 2023 Recipient of The Secretary's Award for School Achievement

NAPLAN 2024 student readiness

Dear parents and carers,

I hope your child is settling in well in their new school year.

This term, your child will undertake NAPLAN assessment. NAPLAN provides schools with valuable information about your child's learning progress in literacy and numeracy. NAPLAN is only one way we assess student learning in years 3, 5, 7 and 9.

NAPLAN will take place from Wednesday 13 March to Monday 25 March in 2024.

Your child's teacher is getting students ready for NAPLAN and will provide appropriate support and guidance. Students will become familiar with the types of questions in the tests and the online testing platform that we use. In addition to school preparation, I want to share with you some information on how you can further support your child for NAPLAN.

Preparation for NAPLAN

Students are not expected to study for NAPLAN and do not need excessive preparation or the use of services by coaching providers. You can support your child by reassuring them that NAPLAN is a part of their school program. If you or your child/children would like to know more about the NAPLAN online platform you can go to the public demonstration site and do some practice tests and past NAPLAN papers are also available online.

Participation in NAPLAN

Adjustments are available for students who have diverse functional abilities and needs. On a case-by-case basis, reasonable adjustments for individual students can be made so they can complete NAPLAN. Speak to your child's teacher to discuss the adjustments available. For more information read the Guide for schools to assist students with disability to access NAPLAN (PDF 96 KB).

Assessment tips

You can support your child by reminding them to simply do their best. You can also encourage:

- a healthy diet
- drinking lots of water
- limiting caffeine (students in year 7 and 9 only)
- getting enough sleep
- exercise and relaxation time

These along with arriving at school on time ready to sit the test will help prepare our school to bring their best on the day.

Kind regards,

Rebecca Webster

Minchinbury Public School

At Minchinbury Public School we are a motivated and respectful community of learners.

CANTEEN MENU



WRAPS

☆ Salad	\$6.80
☆ Sweet Chilli Chicken w/Lettuce	\$6.80
☆ Chicken, Lettuce & Mayo	\$6.80
☆ Chicken, Cheese & Tomato	\$6.80
☆ Ham & Salad	\$7.00
☆ Chicken & Salad	\$7.00
☆ Chicken Caesar Salad	\$7.00

SALADS

☆ Garden Salad	\$6.00
☆ Caesar Salad	\$6.40
☆ Sweet Chilli Chicken	\$6.90
☆ Ham & Garden Salad	\$6.90
☆ Chicken & Garden Salad	\$6.90
☆ Chicken Caesar Salad	\$6.90
☆ Egg & Garden Salad	\$6.90

Garden Salad : Lettuce, Tomato, Cucumber, Beetroot, Carrot
Caesar Salad : Lettuce, Croutons, Egg, Cheese

SUSHI -Gluten Free

☆ Chicken Teriyaki	\$5.00
☆ Tuna	\$5.00

If you would like soy sauce - write it on your lunch bag

EXTRAS

☆ Sauce Portions : BBQ, Tomato	\$0.50
☆ Salad Extras : Tomato, Beetroot Carrot, Cucumber	\$0.70
☆ Cheese Slice, Cheese Shredded	\$0.70
☆ Egg	\$1.20
☆ Chicken, Ham	\$1.50
☆ Toast Any Sandwich	\$0.50

GLUTEN FREE

☆ Butter Chicken w/Rice	\$5.40
☆ Nachos Beef	\$5.80
☆ Chicken Nuggets x 6	\$6.00
☆ Fried Rice v	\$5.00
☆ Chicken Fried Rice	\$5.40
☆ Hash Brown v	\$1.80
☆ Chicken Teriyaki Sushi Roll	\$5.00
☆ Tuna Sushi Roll	\$5.00

SANDWICHES

☆ Vegemite or Jam	\$2.60
☆ Cheese	\$3.00
☆ Ham	\$3.50
☆ Cheese & Tomato	\$4.00
☆ Ham & Cheese	\$4.20
☆ Ham, Cheese & Tomato	\$4.80
☆ Chicken, Cheese & Mayo	\$4.80
☆ Egg & Lettuce w/Mayo	\$5.00
☆ Salad	\$5.00
☆ Sweet Chilli Chicken w/Lettuce	\$5.00
☆ Chicken, Lettuce & Mayo	\$5.00
☆ Chicken, Cheese & Tomato	\$5.00
☆ Ham & Salad	\$5.50
☆ Chicken & Salad	\$5.50
☆ Gluten Free Bread Add	\$0.50

FRESH FRUIT

☆ Fruit Pieces : Apple, Watermelon Mandarin, Seasonal	\$2.00
☆ Watermelon Bowl	\$6.00
☆ Fruit Salad Bowl Seasonal Fruits	\$6.50

DRINKS

☆ Water	\$2.60
☆ Popper Juice : Orange, Apple, ABC	\$2.60
☆ Plain Milk	\$3.20
☆ Oak Milk : Chocolate, Strawberry	\$3.50
☆ Glee : Grape, Watermelon Tropical, Blackcurrant	\$3.60
☆ Groove : Watermelon, Raspberry	\$3.60
☆ Up N Go : Chocolate, Vanilla	\$3.80
☆ Hot Chocolate Collect at canteen	\$2.80
☆ Ice Tea : Peach, Raspberry	\$4.80
☆ Aloe Vera : Grape	\$4.80

ICE BLOCKS 99% Juice

☆ Frozen Juice Cup : Apple, Orange ABC	\$2.00
☆ Fruity Ices : Various Flavours	\$1.00
☆ Sour Snap Stix : Various Flavours	\$1.50

Ice blocks are not put in your lunch order bag
Ask your child to take the lunch bag to the canteen
and collect it at the start of their playtime

- ☆ Everyday Items
- ☆ Occasional Items

MEAL DEALS

☆ MONDAY



Hot Dog

Pick 1 : Hot Dog Tomato Sauce \$7.50
BBQ Sauce

Pick 1 : Popcorn
Watermelon
Apple

Pick 1 : Popper Juice or Water

☆ TUESDAY



Homemade Pizza

Pick 1 : Cheese \$7.90
Ham & Cheese \$8.70
Pepperoni & Cheese \$8.70

Pick 1 : Popcorn
Watermelon
Apple

Pick 1 : Popper Juice or Water

☆ WEDNESDAY



Pasta & Rice

Pick 1 : Butter Chicken & Rice \$8.50
Bolognese Pasta \$8.50
Fried Rice \$7.90

Pick 1 : Popcorn
Watermelon
Apple

Pick 1 : Popper Juice or Water

☆ THURSDAY



Burgers

Pick 1 : Chicken & Cheese \$8.90
Beef & Cheese \$9.20
Vege \$9.20

Pick 1 : Popcorn
Watermelon
Apple

Pick 1 : Popper Juice or Water

**HOT FOOD ITEMS
OVER PAGE**



Register For
Online Ordering
Flexischools.com.au

CANTEEN MENU



HOT BITES

☆ Chicken Nuggets	x 1	\$1.00
	x 4	\$4.00
	x 6	\$5.00
☆ Chicken Wings Hot & Spicy	x 1	\$2.00
☆ Hash Brown		\$1.80
☆ Garlic Bread		\$3.20
☆ Mini Spring Rolls Vegetarian	x 3	\$4.20
☆ Hot Dog With Sauce		\$4.30

NOODLE CUPS

☆ Chicken	\$3.90
☆ Beef	\$3.90
☆ Oriental Vegetarian	\$3.90
☆ Tom Yum Shrimp	\$3.90

Noodle Cups are not put in lunch order bags
Ask your child to go to the canteen at lunch
to collect it

SNACKS

☆ Popcorn GF	\$1.40
☆ Brownie	\$1.40
☆ Chips 27g	\$2.80
☆ Jelly Bowl GF collect at canteen	\$2.80
☆ Banana Bread	\$3.00
☆ Piranha Rice Snaps GF Veg	\$3.20
☆ Homemade Muffin Chocolate	\$4.80

HOMEMADE PIZZA

Only Available
Monday To Thursday

☆ Cheese	\$5.00
☆ Ham & Cheese	\$5.80
☆ Pepperoni & Cheese	\$5.80
☆ Doner Kebab Meat, BBQ & Cheese	\$6.00

PIES & PASTRIES

☆ Mini Beef Pie	\$2.00
☆ Sausage Roll	\$4.50
☆ Meat Pie	\$5.80
☆ Spinach & Ricotta Roll Veg	\$6.20

BURGERS

☆ Chicken Burger Lettuce & Mayo	\$6.00
☆ Chicken & Cheese Burger Mayo	\$6.00
☆ Beef Burger	\$6.00
☆ Beef & Cheese Burger	\$6.40
☆ Aussie Beef Lettuce, Tom, Beetroot	\$6.60
☆ Vege Burger Falafels, Lett, Tomato	\$6.60

Choose from tomato or BBQ sauce on your Burger

PASTA & RICE

☆ Butter Chicken w/Rice	\$5.40
☆ Pasta Bolognese Beef Sauce	\$5.40
☆ Creamy Chicken Pasta	\$5.40
☆ Macaroni Cheese Veg	\$5.90
☆ Lasagna Beef	\$5.90
☆ Fried Rice GF Veg	\$5.00
☆ Chicken Fried Rice GF	\$5.40

TOASTED WRAPS

☆ Cheese	\$3.20
☆ Ham & Cheese	\$4.50
☆ BBQ Chicken & Cheese	\$6.20
☆ Sweet Chilli Chicken & Cheese	\$6.20
☆ Doner Kebab Meat & BBQ Sauce	\$6.60

MEXICAN NACHOS

☆ Beef Nachos Beef Sauce GF	\$5.80
☆ Cheesy Nachos Cheese Sauce Veg	\$5.80
Add Cheese To Your Nachos	\$0.70

DRINKS

☆ Water	\$2.60
☆ Popper Juice : Orange, Apple, ABC	\$2.60
☆ Plain Milk	\$3.20
☆ Oak Milk : Chocolate, Strawberry	\$3.50
☆ Glee : Grape, Watermelon Tropical, Blackcurrant	\$3.60
☆ Groove : Watermelon, Raspberry	\$3.60
☆ Up N Go : Chocolate, Vanilla	\$3.80
☆ Hot Chocolate collect at canteen	\$2.80
☆ Ice Tea : Peach, Raspberry	\$4.80
☆ Aloe Vera : Grape	\$4.80

- ☆ Everyday Items
- ☆ Occasional Items

MEAL DEALS

☆ MONDAY



Hot Dog

Pick 1 : Hot Dog Tomato Sauce \$7.50
BBQ Sauce

Pick 1 : Popcorn
Watermelon
Apple
Pick 1 : Popper Juice or Water

☆ TUESDAY



Homemade Pizza

Pick 1 : Cheese \$7.90
Ham & Cheese \$8.70
Pepperoni & Cheese \$8.70

Pick 1 : Popcorn
Watermelon
Apple
Pick 1 : Popper Juice or Water

☆ WEDNESDAY



Pasta & Rice

Pick 1 : Butter Chicken & Rice \$8.50
Bolognese Pasta \$8.50
Fried Rice \$7.90

Pick 1 : Popcorn
Watermelon
Apple
Pick 1 : Popper Juice or Water

☆ THURSDAY



Burgers

Pick 1 : Chicken & Cheese \$8.90
Beef & Cheese \$9.20
Vege \$9.20

Pick 1 : Popcorn
Watermelon
Apple
Pick 1 : Popper Juice or Water

**COLD & FRESH FOOD
OVER PAGE**



Register For
Online Ordering
Flexischools.com.au

Welcome to Your OSHC by Camp Australia.

A fun, social space for your child to grow.

Your OSHC.



Embrace the benefits of OSHC in 2024

Welcome to Term 1, 2024 and a big Happy New Year from all of us here at Camp Australia! Children are at the heart of everything we do, and our focus is helping them grow, learn and have fun. Through tailored experiences that nurture their passions, your child will embark on a journey that ignites their imagination and showcases their unique talents.



OSHC Information Sessions

Discover everything you need to know about Your OSHC Before and After School Care, Rocketeers Extraordinary Holiday Programs, our inclusive CARE program, and everything else in between. From registration and bookings to billing and the Child Care Subsidy (CCS), the 2024 Info Sessions will cover everything families need to know about their journey with Camp Australia.

Session 1: 13 February 2024, 7:00pm AEDT
Session 2: 15 February 2024, 12:30pm AEDT
campastralia.com.au/virtual-info-sessions

Register your child for Your OSHC

Registering your child means we have all the information we need to safely care for them. By registering now, it gives you the freedom to book whenever you want!

Register now for peace of mind later!

pp.campastralia.com.au



Register for Your OSHC
campastralia.com.au

A wide variety of experiences



Cooking



Active Play



Art & Craft



Mindfulness



Group Games



Lots more!

Benefits of OSHC



For parents and families:

- ✓ Peace of mind, knowing your child is socialising and having fun!
- ✓ Convenient location
- ✓ Child Care Subsidy enabled so eligible families can save money!

For children:

- ✓ Builds confidence
- ✓ Meet new friends
- ✓ Explore new activities
- ✓ Learn through self-directed fun

Child Care Subsidy available for eligible families.

by  Camp Australia

Welcome back to Your OSHC.

by  Camp
Australia



at **Minchinbury Public School OSHC**

Welcome your child back to OSHC in Term 1 with inspiring programs.

The *Your OSHC* team at your school have been busy planning an exciting return to term time. Your program is filled with experiences that aim to connect your child with their friends, explore their interests and ease the transition from the holidays.

	Showcase experience	Feature menu item
Monday	Crown of friends, Cup Stacks, Kho-Kho	Rice Cakes with spreads
Tuesday	Matching Cards, Cricket Game	Lebanese Bread with Salsa
Wednesday	Celebrating Chinese New Year	Mexican Rice
Thursday	Playdough, Uno Flip, Iron Beads	Fairy Bread
Friday	Who Am I, Handy Lego, Snakes & ladder	BBQ Crackers



Register now

Once registered, you can easily make and manage bookings for Your OSHC online via our Parent Portal.

campaustralia.com.au

Kickstart your child's 2024 with fun, social and purposeful programs that will build your child's confidence.

Visit our Get Term 1 Ready page on our website for heaps of great info to kickstart your school year.

[campaustralia.com.au/
back-to-school-term1](http://campaustralia.com.au/back-to-school-term1)





Are you eligible for the School Student Broadband Initiative?

The Australian Government has established the School Student Broadband Initiative (SSBI) to provide free home internet until 31 December 2025¹ for up to 30,000 unconnected families with school aged students.

Eligible families receive free home internet over the National Broadband Network by selecting an offer from a participating internet provider.

Who is Eligible for the SSBI Program?

The SSBI is primarily intended as an affordability measure to help families with school-aged children.

To be eligible for the SSBI, families must:

- Have a child living at home that is enrolled in an Australian school (up to year 12 including from Prep in Qld/Vic/Tas, Kindy in NSW, Reception in SA, Transition in NT/ACT and Pre-Primary in WA).
- Not have an active nbn® network internet service in the previous 14 days. Having a mobile internet service does not affect eligibility.
- Not have had an active nbn connection in the previous 14 days.
- Live in a premises that can access a standard² nbn service.
- Either be referred by a Nominating Organisation or have your suitability determined via an assessment conducted by the National Referral Centre (NRC).

How can I check my eligibility?

A National Referral Centre has been established to help Australian families that meet the eligibility criteria to have the National Broadband Network connected at their home. To check your eligibility, follow these simple steps:

1. Contact the National Referral Centre on 1800 954 610 (Mon-Fri, 10am-6pm AEDT), <https://www.anglicarevic.org.au/student-internet> or email studentinternet@anglicarevic.org.au. Callback and webchat functions are also available via the website.

¹ This is subject to continued involvement in SSBI of participating internet providers beyond the previously announced deadlines and provided the cap of 30,000 SSBI services has not yet be reached.

² A standard nbn service refers to a standard installation of nbn supplied equipment. This includes connecting a fibre optic cable from your street to the nbn utility box outside your premises, then inside to the nbn connection. nbn does not charge end customers for a standard installation. Remember to ask your chosen SSBI participating internet provider if they have any other fees. A small number of premises located in Limited Access Areas (any area within the footprint of the Satellite Network that cannot reasonably be accessed by road and would require some element of air or water transportation) are ineligible to access the SSBI.

2. Check your eligibility – the National Referral Centre team will assess your eligibility for the SSBI, by checking a number of things including your residential address and current financial situation.
3. If eligible, you will be issued a voucher which can be redeemed at any of the participating SSBI retail service providers. The National Referral Centre will also be available to assist with contacting your SSBI internet provider of choice or providing follow-up support.

What services will the National Referral Centre offer?

The National Referral Centre (NRC) is the first point of contact for both self-nominating families and Nominating Organisations.

The NRC will:

- Help people interested in the SSBI understand if they are eligible, issue vouchers and provide information regarding participating retail service providers.
- Provide support to eligible people who are experiencing challenges redeeming the voucher.
- Provide follow-up support to eligible families who have been issued a voucher. The NRC will make three attempts to contact these families to offer their assistance in getting connected.
- Refer, where appropriate, ineligible people to other support services which may assist with financial hardship.
- Answer and resolve queries relevant to the Initiative.

For people from non-English speaking backgrounds, or people with accessibility challenges, the NRC can offer translation services through Language Loop and some of their own bi-lingual staff; and their website is equipped with ReciteMe technology.

IMPORTANT INFORMATION

Eligibility for the SSBI does not guarantee a free service. Vouchers are valid until 31 December 2024 unless the initiative reaches the limit of 30,000 activations ahead of this date. Vouchers can only be used once and can only be used in relation to the address listed, they cannot be transferred to another family.

Once you sign up, the internet provider will help you to set up your connection. The initiative does not include devices such as a computer or tablet or internet filtering.

If you move home at any point, your internet provider will continue to supply you with free home internet over the National Broadband Network at your new address until 31 December 2025 . If you move to an address that does not have access to the National Broadband Network, you will no longer be able to access the free broadband service. You can disconnect at any time but if you do so, you cannot re-join later.

Your family's safety online matters. You can find information from the eSafety Commissioner about staying safe online attached to this letter. More resources for parents can be found on the eSafety Commissioner website at www.esafety.gov.au/parents

More information about the initiative is available by contacting the National Referral Centre on the details above.

Excerpts from

Supporting your K-2 child at NSW schools

<https://curriculum.nsw.edu.au/resources/teaching-resources>

Supporting your K–2 child at NSW schools **A parent and carer guide for the K–2 school years**

You have an important role in your child's learning in the early years of schooling. This guide provides information about the curriculum reform, NSW syllabuses and how to support your child at primary school.

The role of NSW Education Standards Authority (NESA)

The NSW Education Standards Authority (NESA) is responsible for setting and monitoring quality teaching, learning, assessment and school standards across NSW public, Catholic and independent schools.

NESA also develops Kindergarten to Year 12 syllabuses for NSW schools. The NSW syllabus incorporates the Australian Curriculum within them.

NSW syllabuses:

- identify the essential knowledge, skills and understandings that students are expected to develop at each stage of learning
- contain outcomes and content which are intended to be inclusive of the learning needs of all students, including:
 - Aboriginal students
 - students with disability
 - gifted and talented students
 - students learning English as an additional language or dialect (EAL/D)
- communicate and guide connections between the learning outcomes, content and teaching practice.

Stages of learning

NESA sets the learning requirements for each stage of primary school. The 4 stages are:

- EARLY STAGE 1 – Kindergarten
- STAGE 1 – Years 1 and 2
- STAGE 2 – Years 3 and 4
- STAGE 3 – Years 5 and 6.

Syllabuses for learning

NESA develops syllabuses for these learning areas:

- English
- Mathematics
- Science and Technology
- Human Society and Its Environment (HSIE) (History and Geography)
- Creative Arts
- Personal Development, Health and Physical Education (PDHPE)
- Languages – optional for schools.

Adjustments for children with disability

All students are entitled to access and progress through the NSW curriculum. NESA syllabuses have been developed to be inclusive of the learning needs of all students.

Schools are obligated to provide adjustments to teaching, learning and assessment activities for some students with disability. The [Disability Standards for Education 2005](#) describe the legislative requirements of schools to support students with disability. Decisions about adjustments are made through a collaborative planning process that involves the student, parent and carer, [teacher](#) and other professionals. Further information can be found in the [Diversity in learning](#) section on the NESA website.

Access content points to support learning

Access content points have been developed to support students with significant intellectual disability who are working towards Early Stage 1 outcomes. These students may communicate using verbal and/or nonverbal forms.

In Early Stage 1, access content points provide content that help students with significant intellectual disability to work towards each outcome. The access content points are not additional content, but act as a supplement to support students' learning of the curriculum. Teachers can use the access content points on their own, or in conjunction with other syllabus content. If students are able to access outcomes in the syllabus they should not require the access content points.

NSW K–2 English and Mathematics syllabuses

The NSW school curriculum has undergone the first comprehensive reform in 30 years after an extensive curriculum review and consultation.

The curriculum review has been informed by consultation with teachers and education experts from around the state, as well as a detailed examination of quality international education systems. In 2018 and 2019, parents and carers took part in the review through consultation.

Reform recommendations include the priority of building strong foundations for future learning with new English and Mathematics syllabuses for Kindergarten to Year 2. The reformed English and Mathematics K–2 syllabuses highlight foundational literacy and numeracy skills to develop competence in:

- oral language
- reading
- writing
- mathematics.

In this guide you will find an outline of the outcomes your child will learn while engaging with the reformed English and Mathematics K–2 syllabuses during their Early Stage 1 and Stage 1 years. Included in the outline are some suggestions about what you can do as a parent or carer to support your child in these important areas of learning. Use these suggestions to speak, read and write with your child in the language you know best.

English K–2

English K–2 Syllabus overview

The organisation of outcomes and content highlights the importance of strong foundations in the early years across oral language, reading and writing. It supports the development of early literacy knowledge and skills, while continuing to acknowledge the importance of learning about and enjoying literature.

All the outcomes for English K–2 fall under:

- Understanding texts
- Creating texts.

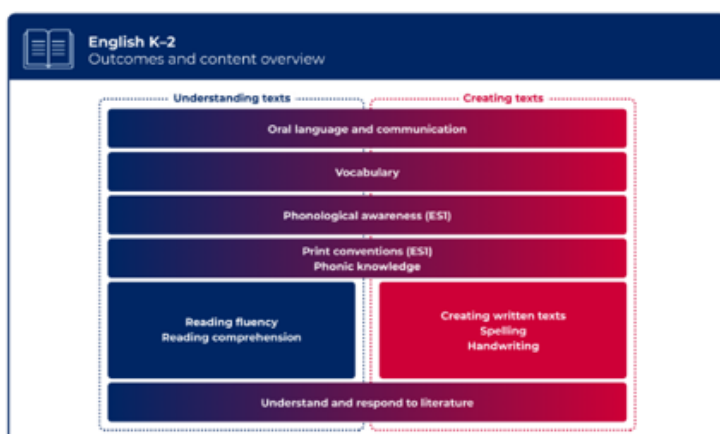


Figure 1: English K-2 outcomes and content overview

Mathematics K–2

Learning Mathematics in K–2 enables students to become confident, effective users and communicators of mathematics. They develop an increasingly sophisticated understanding of mathematical concepts and processes that helps them interpret and solve problems. Students make connections within mathematics and connect mathematical concepts with the world around them. They learn to understand and appreciate how mathematics is a relevant part of their lives.

The reformed Mathematics K–2 syllabus organises the outcomes and their related content into 3 areas:

- Number and algebra
- Measurement and space
- Statistics and probability.

The important role of Working Mathematically is incorporated into all areas of mathematics.

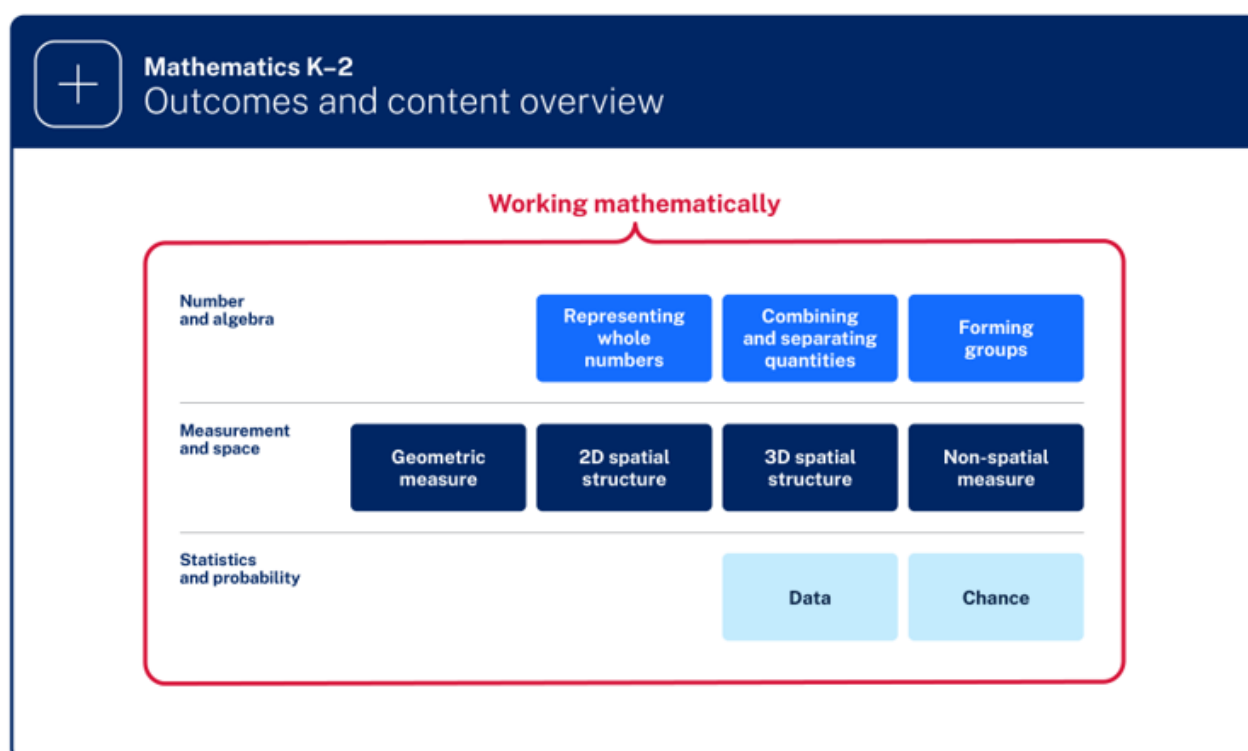


Figure 3: Mathematics K–2 outcomes and content overview



REGISTER FOR SEASON 2024

Are you interested in playing Soccer with your friends and having fun at the same time?

Join Minchinbury Jets Soccer Club in 2024, we have teams ranging from U/5 to U/15 Mixed and U/16 to U/18 Boys and Girls Teams

Registrations for Season 2024 are now available online or come and see us at one of our Club Registrations Days, every Saturday in February from 9am to 2pm at Minchinbury Oval. Get in quick to avoid missing out.

Visit our website for more details



www.minchinburyjets.com



READY 2 SWIM



JUST
**KEEP
SWIMMING**

Award Winning, Family Owned
Swim School located in Mincinbury

Enrol online www.ready2swim.biz

Follow us on social media @ready2swim



CONTACT
US FOR A
FREE TRIAL
LESSON

JOIN US AT

ARTICULATE DANCE
STUDIO
SINCE 2012

ARTICULATE DANCE STUDIO IN 2024

WE ARE LOCATED
AT MINCHINBURY
COMMUNITY
CENTRE!!!



PRIVATE LESSONS ARE ALSO AVAILABLE

JAZZ | TAP | BALLET | HIP HOP | LYRICAL | CHEER | ACRO
OF ALL AGES FROM 2 YEARS TO ADULT

Contact: Kerrie-Anne McLeod
0407 498 092
articulatedancestudio21@gmail.com

